

# Sketches

Marco Corvi

[marco.corvi@gmail.com](mailto:marco.corvi@gmail.com)

2017

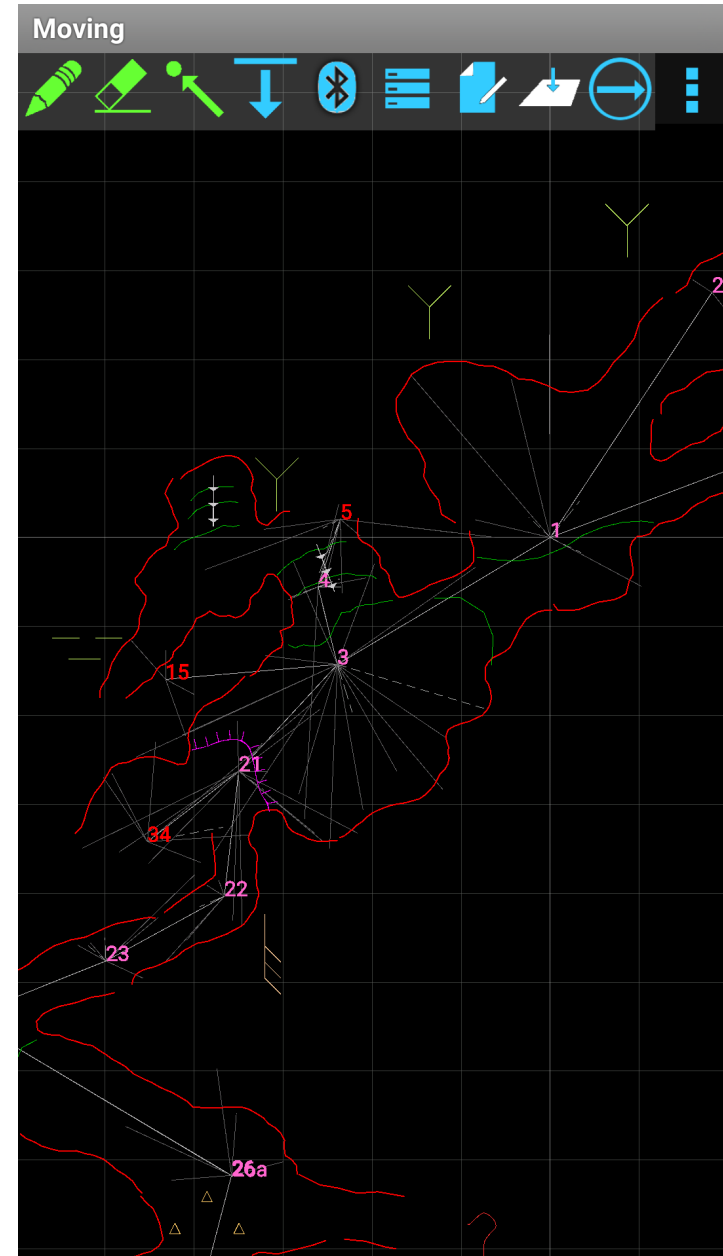
# Survey sketches

- Many sketches per survey
- Sketch = plan view + profile view
  - Profile = either extended or projected
- Created or opened through the sketch dialog (of the survey data window)

# Survey window

- Modes (green buttons)

- Move
- Draw
- Erase
- Edit



# Sketch window menus

Switch sketch / Close

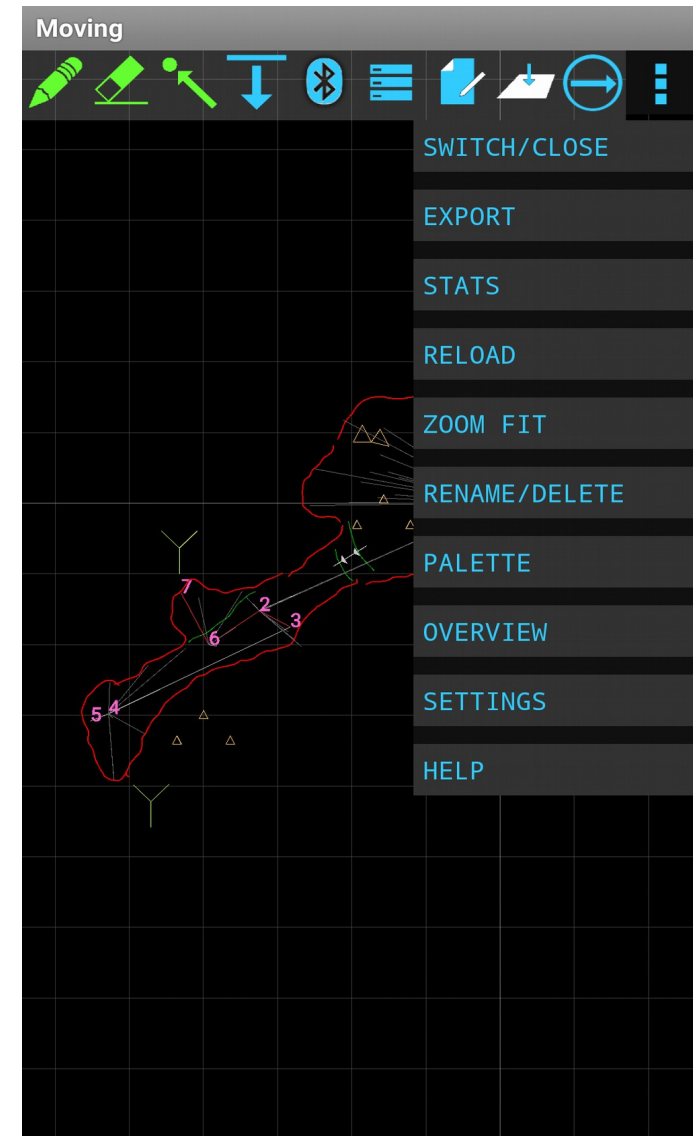
Export sketch

Statistics

Reload sketch from backup

Fit to canvas

Rename sketch / Delete

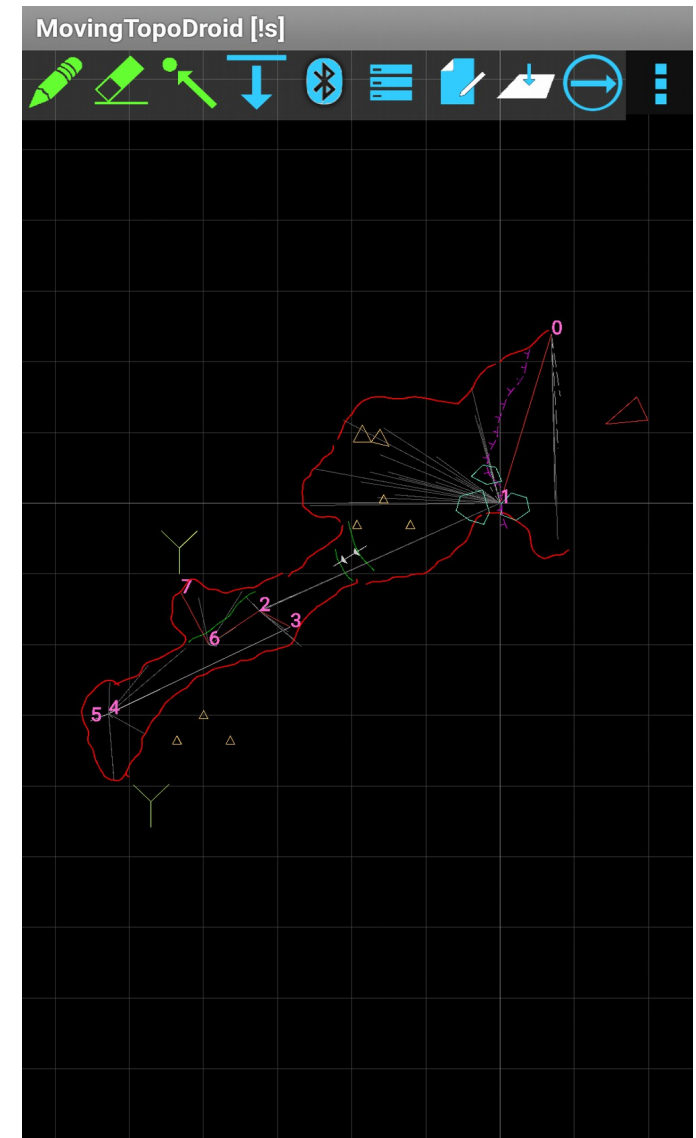


# Sketch canvas

- North upwards in the plan view
- Vertical upwards in the profile view
- References
  - Grid
  - Midline
  - Splay shots
  - Stations
- Zoom controls (optional) and two finger zoom
- Side drag (optional)

# Sketch drawing

- Drawing tools
  - Points: labels and iconic symbols
  - Lines
  - Areas
- Undo / Redo

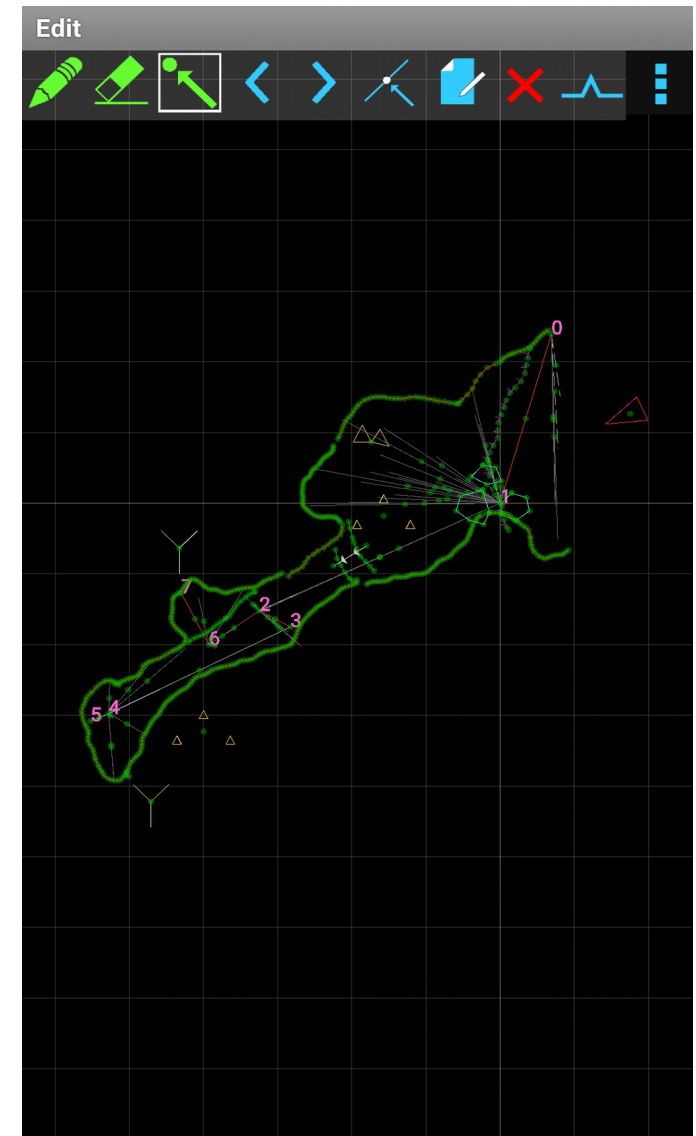


# Sketch erasing

- A “real” eraser
- Undo / Redo (but a bit tricky)

# Sketch editing

- Point editing
  - Move
  - Delete
  - Etc.
- Item editing
  - Properties
  - Delete
- Station editing
- Shot editing





# Sketch export

- PNG
- Th2 (Therion)
- Csx (cSurvey)
- DXF (AutoCAD)
- SVG (Illustrator)

# Sketch export settings

- SVG grid
- PNG resolution
- PNG background color
- DXF scale
- DXF splay endpoints
- Therion u:splay segment